

Vision is
our mission®

WIEGEL

Transport Equipment | Stokvis Group

Camera AMOS CPH 51°PAL

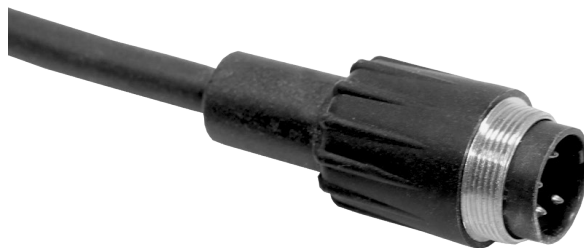
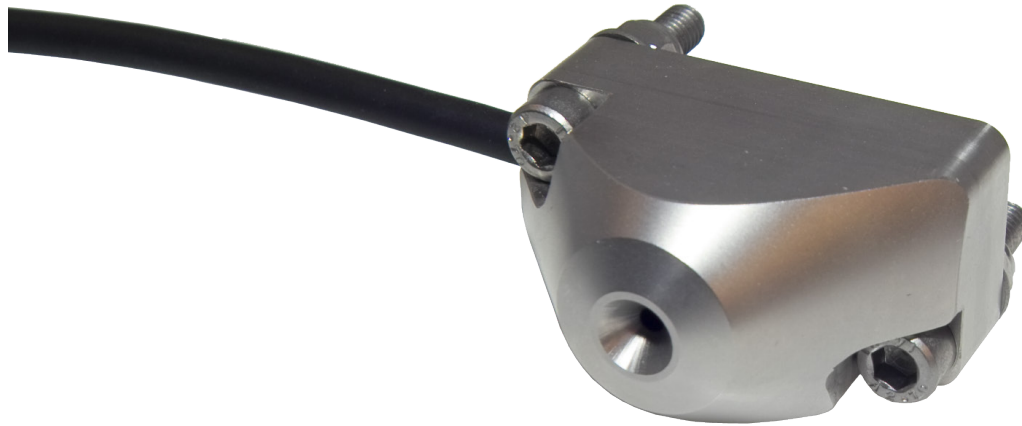
Article no. 0199700

Camera AMOS CPH 51°PAL 0.2B

Article no. 0199710

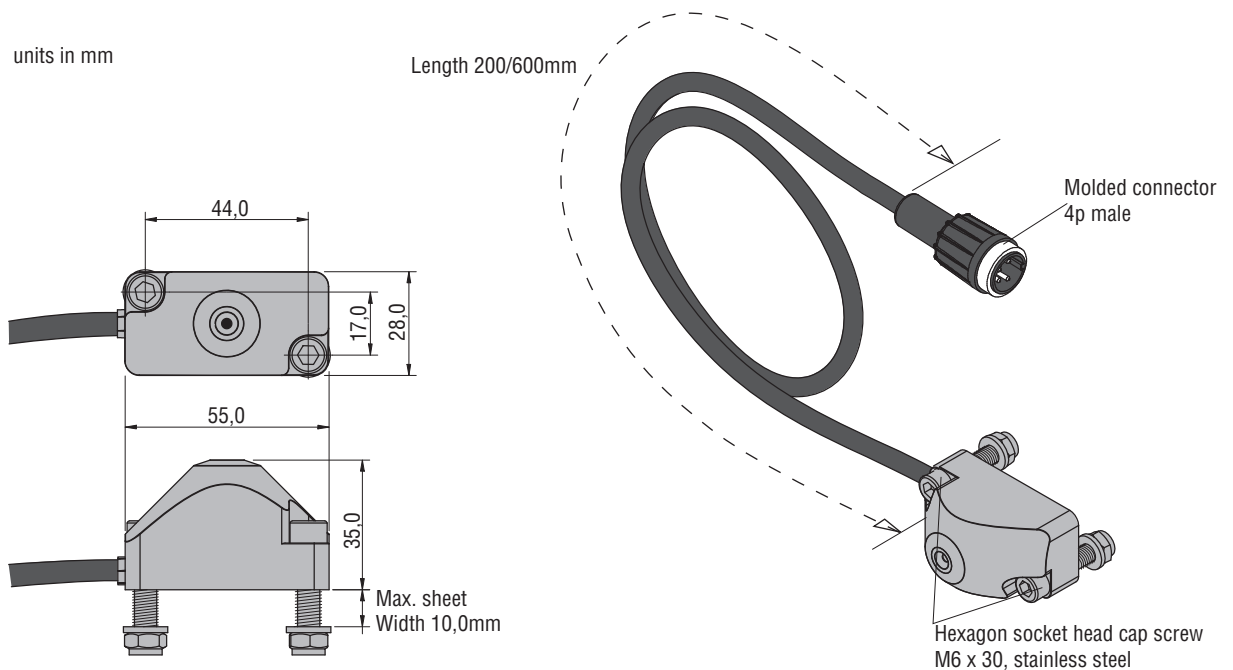
2017 • DS0961470 EN A 01

Product Data



Dimensions

units in mm



TECHNICAL DATA

Camera AMOS CPH 51° PAL

Camera AMOS CPH 51° PAL 0.2B

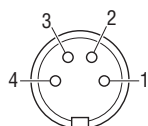
	Description	
Article number	0199700	0199710
Cable length	600mm	200mm
Weight	0,300kg	0,250kg
Lens specified	51° horizontal, and 38° vertical.	

	Sensor	
Video signal	PAL Standard, 1,0Vpp. composite video at 75Ω.	
Sensor element	1/4" CMOS digital image sensor. 640(H) x 480(V).	
Light sensitivity	<0,05 Lux.	
Dynamic range	80dB.	

	Electrical	
Power input	Stabilised 12V/DC.	
Power consumption	<+15°C: 3W and >+15°C: 1,2W (heating off).	
Cable	Multicable with 4 pins molded male connector (camera power-input and video-output).	
Min. cable bend radius	50mm.	

	Mechanical	
Housing	Stainless steel 316.	
Lens glass	2 mm chemically hardened, toughened, tempered float glass 7 x stronger than ordinary glass with anti reflective coating.	
Protection	IP68 according to IEC 60529 (up to 10m under water). IP69K according to DIN 40050-9, camera housing can withstand high pressure cleaning with water; 14-16L/min. 80°C and 100 bars flow.	
Shock constancy	Shock and vibration resistant for usage on forks of forklift trucks, 50G shock test and 15G random vibration test.	
Mounting hardware	Standard stainless steel.	
Operating temperature	-40°C to +85°C.	
Storage temperature	-40°C to +125°C.	

	Certification	
Approvals	Product is in compliance with the EMC directive.	



Front side 4p molded male connector

Electrical connections

1 = Coax core	= video
2 = Coax shielding	= Video GND
3 = Red	= 12V/DC
4 = Black	= 0V
Shield	= GND

All data subject to change without notice. All dimensions are for commercial purpose only.
The camera/display systems from Orlaco comply with the latest CE, ADR, EMC and mirror-directive regulations, where applicable.
All products are manufactured in accordance with the ISO 9001 quality management system, ISO/TS 16949 quality automotive, ISO 14001 environmental management systems and all Ex products with the IECEx scheme and ATEX directives, where applicable.

WIEGEL

Transport Equipment | Stokvis Group 

 **ORLACO**
Specialised Camera Solutions

Carolus Clusiuslaan 3
2215RV Voorhout
T +31(0)88 7865300
E info@wiegel.eu

wiegel.eu